

PSEN mg1-A-LLFXX-LBA2-U1-D switch

6M000010



Safety gate system PSENmgate, with operation elements, 2 illuminated pushbuttons (1 NO each) and 1 E-STOP pushbutton (2 NC + 1NO), fully coded, with automatic reset, safety switch for entry from left, 19-pin M23 male connector, cable outlet downwards, single connection

Technical details

General data

Approval:	CE, cULus Listed, FCC, IC, EAC (Eurasian), TÜV
Sensor principle:	Transponder
Coding level to ISO 14119:	High
Classification to EN 60947-5-3:	PDDB
Transponder coding:	fully coded
Reset type:	Automatic reset
Suitable for series connection:	no
unit type:	Sensor

Technical data

Electrical data

Supply voltage (V):	24 - 24 V
Type of supply voltage U1:	DC
Power consumption DC:	1 W

Inputs

Number of inputs:	7
DC voltage at input:	24 V DC

Emergency stop

Number, E-STOP N/C:	2
Number, E-STOP signal contact:	1

Release type emergency stop:	Turn release
Contact material E-STOP:	Au
Cont. mat. sign. cont. E-STOP:	Au
Push button	
Number, pushbutton:	2
Switch cap. p/b to standard:	EN 60947-5-1
Contact material pushbutton:	Ag
Semiconductor outputs	
Number of OSSD outputs:	2
Number of sig. outputs:	1
Potential isolation S/C O:	No
S/C output short circuit proof:	Yes
Utilisation cat. to EN 60947-1:	DC-13
Button	
Contact material button:	AgNi
Switch cap. button to standard:	EN 60947-5-1
Environmental data	
Ambient temperature standard:	EN 60068-2-14
Ambient temperature:	0 - 55 °C
Storage temperature standard:	EN 60068-2-1/-2
Climatic suitability standard:	EN 60068-2-78
Humidity rating:	93 % r. h. at 40 °C
Perm. operating height ASL:	2000 m
EMC to standard ...:	EN 55011: Class A, EN 60947-5-3, EN 61326-3-1
Vibration to standard ...:	EN 60068-2-6
Acc. shock to standard1:	30g
Overvoltage category:	III
Pollution degree clear.&creep.:	3
Protection type, housing:	IP65

Times	
Pulse length lock/unlock req.:	350 - 400 ms
Mechanical data	
Escape release available:	No
Type 1 actuator:	PSEN ml 2.1
Sensor can be flush-mounted:	No
Product material:	Zn, Aluminium, Galvanised steel, Stainless steel, Plastic
Housing material upper part:	Plastic
Height dimension:	237.5 mm
Width dimension:	40 mm
Depth dimension:	65 mm
Net weight:	1061 g
Gross weight:	1529 g
Transponder	
Operating frequency:	122 kHz - 128 kHz
Environment	
WEEE classification (08/2018):	5 devices (feed size < 50cm)
Commercial data	
ECLASS version:	ECLASS-13
ECLASS Reference Feature:	27272603
ETIM Version:	ETIM-9.0
ETIM Reference Group:	EG000026
ETIM Reference Feature:	EC002593

Optional accessories

570460

PSEN ml escape release





570461

PSEN ml auxiliary release hd1



570462

PSEN ml escape release extension



570468

PSEN ml escape release cordset 1,0m



570469

PSEN ml escape release cordset 1,25m



570470

PSEN ml escape release cordset 1,5m



570471

PSEN ml escape release cordset 2,0m



570472

PSEN ml escape release cordset 2,5m



570473

PSEN ml escape release cordset 3,0m



570474

PSEN ml escape release cordset 3,5m



570475

PSEN ml escape release cordset 4,0m



570476

PSEN ml mounting plate angled



570481

PSEN ml 2.1 actuator



570483

PSEN ml 2.1 round actuator



570484

PSEN ml actuator 10° adapter



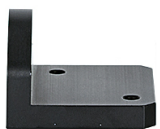
570485

PSEN ml actuator center ring



570490

PSEN ml mounting plate



570492

PSEN ml bracket sliding door



570495

PSEN ml door handle sliding door



570499

PSEN screw set bracket sliding door



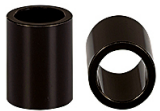
6O000006

PSEN ml DHM down I 2.1



6O000009

PSEN ml DHM extension



6O000012

PSEN ml DHM extension cover



6O000013

PSEN ml DHM mounting plate



6O000014

PSEN ml DHM mounting flap



C1000071

Cable/XX/M23-19SF/XXX-XXXX/X/002/0Q25/XX



C1000072

Cable/XX/M23-19SF/XXX-XXXX/X/003/0Q25/XX



C1000073

Cable/XX/M23-19SF/XXX-XXXX/X/005/0Q25/XX



C1000074

Cable/XX/M23-19SF/XXX-XXXX/X/010/0Q25/XX



C1000075

Cable/XX/M23-19SF/XXX-XXXX/X/020/0Q25/XX



C1000076

Cable/XX/M23-19SF/XXX-XXXX/X/030/0Q25/XX



C1000077

Cable/XX/M23-19SF/XXX-XXXX/X/050/0Q25/XX



G1000009

PIT gb color covers
